

# The Burden Basket



## St. Joseph Apache Mission Restoration Project

### DIRECTOR'S REPORT: PETER A. BOEGEL, OFM

#### Funding Progress

Since fundraising began in February 1998 we have raised \$767,304. Of that amount 36% came from private Foundation grants, 51% from our generous donors, and the remaining 13% from the hard work of raffles, food sales, concerts and interest earned. With 42% of funds needed, we are making remarkable progress!

The work continues: Expenses to date have been \$641,542.



Recently I was reminded of a long-ago English class where I learned the difference between *intrinsic* motivation and *extrinsic* motivation. The restoration project crew members are *extrinsically* motivated by the wages they earn. But certainly there are easier ways to make a living! What keeps them hard at work day after day is their *intrinsic* motivation to be part of the history of this special church and veteran's memorial. Their dedication and labor are motivated by a desire to make a lasting and beautiful contribution to the people of Mescalero and to all the people who find peace and inspiration here. It is an honor to be surrounded by such highly motivated people. We are grateful also to our donors for *their* intrinsic motivation and generosity. We can all feel proud of the wonderful things we are accomplishing together.

#### Volunteers & Summer Trainees

The restoration project at St. Joseph Apache Mission has been blessed with many people who are dedicated to helping ensure that this church and veteran's memorial will continue to serve the many people who come here. Never enough can be said about those who offer their time, talent or treasure to this project.

Currently one volunteer stands out as extra-special. Tom Briones is a native of Las Cruces, New Mexico who works as an electrical engineer in Houston, Texas. Last summer Tom visited the Mission and was enthralled with what we were doing, so he asked if he could help. Since that visit Tom has traveled to Mescalero every month to spend a day getting dirty and working hard. Note that Houston to Mescalero is at least a twelve-hour drive! Each way!

Tom's enthusiasm for the restoration project has infected his fiancée, Susan Biles, who has offered a hand as well. Tom and Susan are planning to be

married at St. Joseph Apache Mission next fall. This is just one example of people deciding to make this special place a part of their lives.



Susan and Tom

Although we welcome volunteer help, it takes a large time commitment because of the training needed to learn the repointing techniques. Many people help in many ways, the Restoration Team continues to grow.

We already have our trainees lined up for the summer. The crew is looking forward to getting back outside to finish the work on the exterior east wall.

#### Revenue & Expenses

10/1/04—3/31/05

##### Expenses

Payroll Expenses	\$37,932
Equipment & Supplies	\$6,984
Professional Fees	\$7,744
Office Expense	\$3,930
Administration & Fundraising	\$5,251
<b>Total</b>	<b>\$61,841</b>

##### Revenue

Foundation Grants	\$56,000
Steward Program	\$5,560
Donations	\$46,211
Fundraisers & Interest	\$10,844
<b>Total</b>	<b>\$118,615</b>

Funds on hand: **\$125,762**

In-Kind Donations by Volunteers & Staff: **\$61,347**

## INTERIOR WEST WALL REPOINTING



*Arylis, Tommy, and Brother David working on the interior west wall.*

Last fall the scaffolding was set up on the interior of the west wall. This winter (and next) the crew is involved in repointing the stonework, reinforcing the roof beams, and eventually replacing the badly damaged colored Plexiglas window panels. The crew has made good progress repointing the mortar, which proved to be quite weak. Many passageways for bats and cold air have been plugged up as the stone



wall is strengthened. The work is moving along quite nicely; adding Arylis Chee to the crew fulltime has been a big help.

We discovered some unexpected damage to the concrete arch above the large window in this wall. Preservation architect Dale Zinn advised us to install steel reinforcement to this arch. CVE Machine & Welding in High Rolls, NM has done a beautiful job fabricating the steel reinforcing arch to Mr. Zinn's specifications. Their work is superb and installation is expected to be completed before the crew moves outside in May.



## WELCOME BACK TO AN OLD FRIEND



*Paul Botenhagen, OFM*

Father Paul Botenhagen, OFM, has returned to Mescalero as our Pastor. You may remember him from his first assignment to Mescalero from 1997 to 2002. Father Paul is delighted to be back, and is already working hard to serve the community. People visiting the church are always thrilled when they chance upon Fr. Paul playing the piano, filling the church with beautiful music.

Originally from San Francisco, as a Franciscan Friar Father Paul taught art at St. Mary's High School in Phoenix and, besides serving in Mescalero, has served in parishes in the Portland, Oregon area as well as in Toledo, Washington.

Father Paul has a passion for fishing, the outdoors and photography.

Welcome back Fr. Paul!

## MISSION RECEIVES STATE & NATIONAL RECOGNITION STAFF ATTENDS NMHPA CONFERENCE



*Fr. Albert Braun*

After over two years of compiling material and fine-tuning the nomination paperwork, St. Joseph Apache Mission church and veteran's memorial has been placed on the New Mexico State Register of Cultural Properties, The New Mexico Most Endangered Places List for 2005 and finally, the National Register of Historic Places. The National Register is the official Federal list of historic properties worthy of preservation. All of these designations give the church an official status, and with time the notoriety that we need in order to attract certain foundation grants and additional donors.

We would like to give a special thanks to Jim Steely, Senior Historic Consultant at SWCA, who helped with editing the State and National applications. Cody Browning, the Mescalero Tribal Archaeologist, who did the surveying. Pete Eidenbach, Associate Professor, New Mexico State University, and Sara Eidenbach, Human Systems Research, for the mapping and consultation. Dorothy Cave Aldrich, author, for consultation, information, encouragement and moral support. Holly Houghten, Mescalero Tribal Preservation Officer, for consultation. Lynda Sanchez, author, for

information, support and encouragement. Ellyn Bigrope, Mescalero Cultural Center and Museum Curator, for information. Rick Wessel, NM Environmental Scientist-Historic Preservation Office, for information and support. Henrietta Stockel, author, for information.

Thanks also to John Murphy, from the New Mexico State Historic Preservation Office, for guidance and direction. And last but not least the Serna family for their sacrifice, encouragement and patience while Mary dedicated extra time to successfully pursue this official recognition.

These listings do not lessen our control or ownership of the church, but offer protection to help ensure that the Mission will continue to serve the people of Mescalero and the thousands of visitors that come each year.

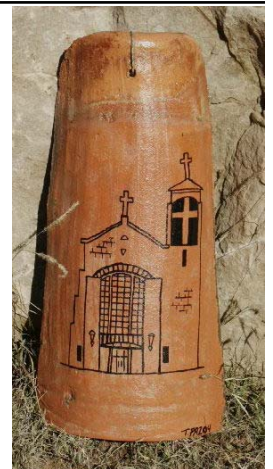


In April the restoration staff attended the New Mexico Historic Preservation Alliance (NMHPA) conference. This year the conference was held in Taos, NM. It was an enjoyable, educational gathering of people involved in many different types of preservation work throughout the state. Our project was given praise for helping to train skilled restoration specialists. During the conference we viewed a short video about our restoration project produced by the NMHPA. It is a beautiful piece we will use to help tell the story of this church.

## FUNDRAISING

One of our successful fundraising events is the annual restoration raffle. This year the drawing will be held on Sunday October 2, 2005. Last year's raffle brought in over \$8,000.00; about a quarter of that from people who not only participated in the raffle, but made additional donations. This year our goal is to raise \$10,000. The first prize will be \$500 donated by the Restoration Committee members. Currently we are accepting Native American art and craft works for the raffle. If you would like to help sell raffle tickets please contact Mary Serna at 505-464-4539.

We still have clay roof tiles from the Mission for sale, either plain or painted by local artists. For more information please check out our website at [www.stjosephmission.org](http://www.stjosephmission.org), or stop by the restoration office and see our display. We have several different prices, subjects, and we can have them custom made for you. We will ship them for an additional fee.



---

## **St. Joseph Apache Mission Restoration Project**

PO Box 187  
Mescalero, NM 88340-0187

Phone: (505) 464-4539

---

Visit our website!  
[www.stjosephmission.org](http://www.stjosephmission.org)

---

### **Restoring the Building and Rebuilding Lives**



#### *What's inside:*

- ◇ *State & National Recognition*
- ◇ *Interior West Wall Progress*
- ◇ *An Old Friend Returns*
- ◇ *Vounteers*
- ◇ *Fundraisers*

